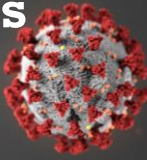


DSHS Region 8

Coronavirus Update 11/19/2020



Region 8 Responds

The Regional Health and Medical Operations Center (RHMOC) is open 8am to 5pm Monday through Friday. Please send inquiries, questions, subscription requests or reports to Region8COVID-19@dshs.texas.gov or call 210-949-2121. **Please Note: The Region 8 Daily Update is intended for emergency managers, elected officials, infection preventionists and public health stakeholders. We encourage you to share with appropriate entities, but we do not consent to posting the Daily Update on social media platforms. Anyone who would like to receive the Daily Update can request to be added to the distribution list by emailing Region8COVID-19@dshs.texas.gov**

Multiple COVID-19 Outbreaks Linked to a Wedding Reception

The Centers for Disease Control and Prevention’s (CDC’s) Morbidity and Mortality Weekly Report (MMWR) November 13 issue highlights the circumstances of a wedding reception in rural Maine that resulted in 177 COVID-19 cases. Large gatherings pose a high risk for SARS-CoV-2 transmission. A wedding reception with 55 people attending in a rural Maine town led to COVID-19 outbreaks in the local community, as well as at a long-term care facility and a correctional facility in other counties. Overall, 177 COVID-19 cases were linked to the event, including seven hospitalizations and seven deaths (four in hospitalized persons). Investigation revealed noncompliance with CDC’s recommended mitigation measures. To mitigate transmission, persons should avoid large gatherings, practice physical distancing, wear masks, stay home when ill, and self-quarantine after exposure to a person with confirmed SARS-CoV-2 infection. For more see <https://www.cdc.gov/mmwr/volumes/69/wr/pdfs/mm6945a5-H.pdf>

Region 8 Appreciates!

Based on feedback received from our daily Coronavirus Update [survey](#), we will highlight contributions from specific individuals or groups each week. If you would like to submit a person or group for recognition, please email Region8COVID-19@dshs.Texas.gov.

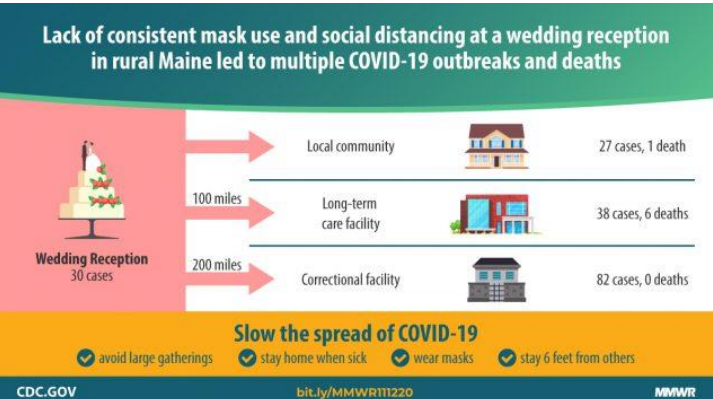
This week, **Region 8 appreciates epidemiologists.** Epidemiologists are public health professionals who investigate patterns and causes of disease and injury. Epidemiologists are trained at the Bachelor or Master degree level or have learned their skills on the job. They collect and analyze data to study public health problems, like COVID-19, and seek to reduce its spread in the community. Epidemiologists are working at the national, state and local levels to combat this pandemic. **Thank you, epidemiologists, for your contributions to public health!**

COVID-19 Vaccine Provider Enrollment

To enroll as a COVID-19 provider go to the registration portal at EnrollTexasI2.dshs.texas.gov. For questions or more information on the COVID-19 Vaccine Program, visit the [DSHS COVID-19 website](#) or email COVID19VacEnroll@dshs.texas.gov. To see regional enrollment <https://txdshs.quickbase.com/db/bqx23e68f>

COVID-19 Testing Sites

Registration for mobile testing sites is now available at <https://Texas.curativeinc.com/welcome>. For walk-up sites, you can register on site. For more information on additional test sites state-wide, visit <https://txcovidtest.org>. For more information on San Antonio testing sites, click [here](#). Hospitals and doctors’ offices may also provide testing.



Date/Time	County	Location
11/23 8 to 4	Gillespie	Pioneer Pavilion 432 Lady Bird Dr., Fredericksburg Walk-up
11/25 8 to 4	Kerr	Hill Country Youth Center 3785 TX-27, Kerrville Walk-up



TEXAS Health and Human Services

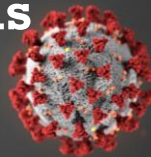
Texas Department of State Health Services

Dept. of State Health Services
7430 Louis Pasteur
San Antonio, TX 78229
(210) 949-2000 phone
(210) 949-2015 fax

dshs.texas.gov/coronavirus

DSHS Region 8

**Coronavirus
Update
11/19/2020**



COVID-19 Cases at a Glance

Texas				USA			World	
1,048,383				11,465,722			55,928,327	
REGION 8	Case Type			Status			Summary	
	Pending Investigation	Confirmed	Probable	Active	Recovered	Deaths	Total	New
	1097	93990	15078	4187	81487	2113	110165	+588
Counties								
Atascosa	103	1343	298	117	1610	17	1744	+5
Bandera	20	207	47	29	242	3	274	+2
Bexar	0	59220	11674	1428	45778	1307	70894	+366
Calhoun	20	951	20	22	961	8	991	+4
Comal	0	3079	1206	372	3791	125	4285	+45
DeWitt	0	1096	0	72	969	55	1096	-
Dimmit	20	296	16	15	313	4	332	+3
Edwards	5	77	6	4	84	0	88	-
Frio	71	806	55	76	851	5	932	+32
Gillespie	67	409	84	84	474	2	560	+3
Goliad	2	177	54	11	218	4	233	+8
Gonzales	49	1156	39	49	1185	10	1244	-
Guadalupe	179	4009	490	152	4481	45	4678	+9
Jackson	63	700	19	86	689	7	782	+3
Karnes	27	475	27	21	499	9	529	-
Kendall	107	448	231	114	666	6	786	+6
Kerr	122	760	151	141	880	12	1033	+19
Kinney	4	46	1	3	48	0	51	-
LaSalle	0	168	7	16	155	4	175	+4
Lavaca	98	1244	71	115	1285	13	1413	+5
Maverick	0	4690	0	446	4100	144	4690	+28
Medina	30	991	400	46	1340	35	1421	+9
Real	6	125	2	3	128	2	133	+2
Uvalde	0	1014	35	78	931	40	1049	-
Val Verde	0	2932	0	325	2477	130	2932	-
Victoria	0	4761	9	258	4414	98	4770	+27
Wilson	53	1048	112	58	1135	20	1213	+4
Zavala	38	520	24	36	538	8	582	+4
Correctional/ICE Facilities								
TDCJ†	0	790	0	1	789	0	790	-
ICE‡	13	324	0	9	328	0	337	-
Other§	0	128	0	0	128	0	128	-
†DeWitt: Stevenson Unit (70); Frio: Briscoe Unit (32); Medina: Ney Unit (162), Torres Unit (196); Karnes: Connally Unit (330); LaSalle: Cotulla Unit (205)								
‡Frio County (223), Karnes County (156), LaSalle County (15)								
§Atascosa County Jail (14), Dimmit County Jail (26), Guadalupe County Jail (7), Jackson County Jail (1), Karnes County Jail (2), Karnes County Det. Facility (42), Kinney County Det. Facility (35), Uvalde County Jail (1)								
Region 8 Case Summary							Total	New
RHMOC							21090	+109
Community Cases							19835	+109
Inmate†/Detainee‡ Cases							1255	-
Local Health Entities*							89075	+479
*Bexar, Comal, DeWitt, Goliad, LaSalle, Maverick, Val Verde & Victoria Counties							TOTAL	110165
								+588

Recovery Counts: Region 8 is no longer conducting active case monitoring and will report estimated recovery counts using a time-based strategy to determine the date that a case is no longer likely to be infectious.



TEXAS
Health and Human
Services

Texas Department of State
Health Services

Dept. of State Health Services
7430 Louis Pasteur
San Antonio, TX 78229
(210) 949-2000 phone
(210) 949-2015 fax

dshs.texas.gov/coronavirus