

FILED
AT _____ O'CLOCK _____ M

AUG 31 2020

Gisela Stripes
COUNTY CLERK, CORYELL CO., TEXAS

CORYELL COUNTY

Request For Information

Fiber-Optic/Wireless Network Design Standards
Submissions must be received no later than: September 21, 2020

Section I – General Information

Coryell County is seeking information from service providers and related firms to assist in developing standard design specifications for connectivity via fiber and cabling of certain County operated buildings in the downtown area of Gatesville, Texas. The County's goal in this RFI process is to establish a set of standards that meet the technical needs of the service providers in the area and the end-users who seek to transfer data and records via the fiber and cabling or wireless connectivity.

These standards will be applied in a forthcoming Request for Proposals (RFP) for fiber and cabling network design and construction services, or wireless connectivity project. Note that submitting a response to this RFI is not a guarantee in any way that a vendor will be selected for any subsequent RFP, nor does it preclude any vendor from responding to future procurement opportunities.

The remainder of Section I provides background information on the County and the County's initiatives. This includes information on the connectivity construction project and draft specifications. Section II outlines the specific information requested from interested parties. Section III describes the submittal instructions.

Project Background

Coryell County is a continuously growing community, and as such, has a desire to expand the capabilities of our connectivity between County Offices. Also, a new software company will be providing consolidated and integrated software for the various County Offices to be able to share information and prevent redundant entry of data. Coryell County is interested in developing a master connectivity plan to guide the County in planning, budgeting, and implementing a connectivity infrastructure project.

The addition of the connectivity between County Sites will serve as a time and resource savings to the County, and allow the County to expand services without additional expense over the long term by providing efficiency in the processes currently executed by the County.

The project will consist of connecting six (6) County Buildings, with approximately 1600 feet of redundant high-speed fiber optic cabling, or a wireless connectivity solution, including the installation of connection points in the various buildings. A map is provided for building identification and your visual orientation.

The County would like to complete this project as quickly as possible to facilitate the implementation of integrated software between County Offices.

Prior to the issuance of a Request for Proposals for design and build of the connectivity project discussed above, the County seeks input from stakeholders on the technical specifications and design standards.

Section II-Information Required

The objective of this RFI is to solicit input to develop a set of standards that meets the needs of the County. Therefore, the County requests feedback from interested parties on the standards recommended to accomplish the County's goals, on the following factors:

1. Capacity-What are the data transfer and connectivity needs of the County, internet service providers or related vendors? Specifically, for fiber, what fiber count and type should be installed? For wireless connectivity, what method is recommended, and what hardware is recommended/required?
2. Robustness-What materials, construction standards, and placement needs exist to reasonably protect the fiber or wireless system, and not unduly complicate maintenance and repairs?
3. Drops-What conduit and box sizes and building connections are appropriate to meet the County's needs?
4. Other - What other design criteria or issues should the County examine to ensure standards meet the needs of users?

Section III-Submittal Instructions

Submittals Requirements

Coryell County is asking interested parties to submit a response containing the following information:

1. Brief history of your firm and identification of a point of contact.
2. Brief description of experience providing similar services/supplies.
3. Responses to questions outlined in Section II.
4. Any other pertinent information or materials that support design decision-making.

Due Date

Interested parties may submit an electronic PDF of all materials by September 21, 2020, 5:00 p.m. to the following point of contact:

Roger Miller
Coryell County Judge
800 E. Main, Ste. A
Gatesville, Texas 76528
Ph. (254)865-5911, ext. 2221
countyjudge@coryellcounty.org

Communication Regarding This RFI

All communications from prospective respondents regarding this RFI must be in writing by email to Roger Miller, Coryell County Judge (countyjudge@coryellcounty.org), communication by telephone or in person will not be accepted.

Section IV-Next Steps

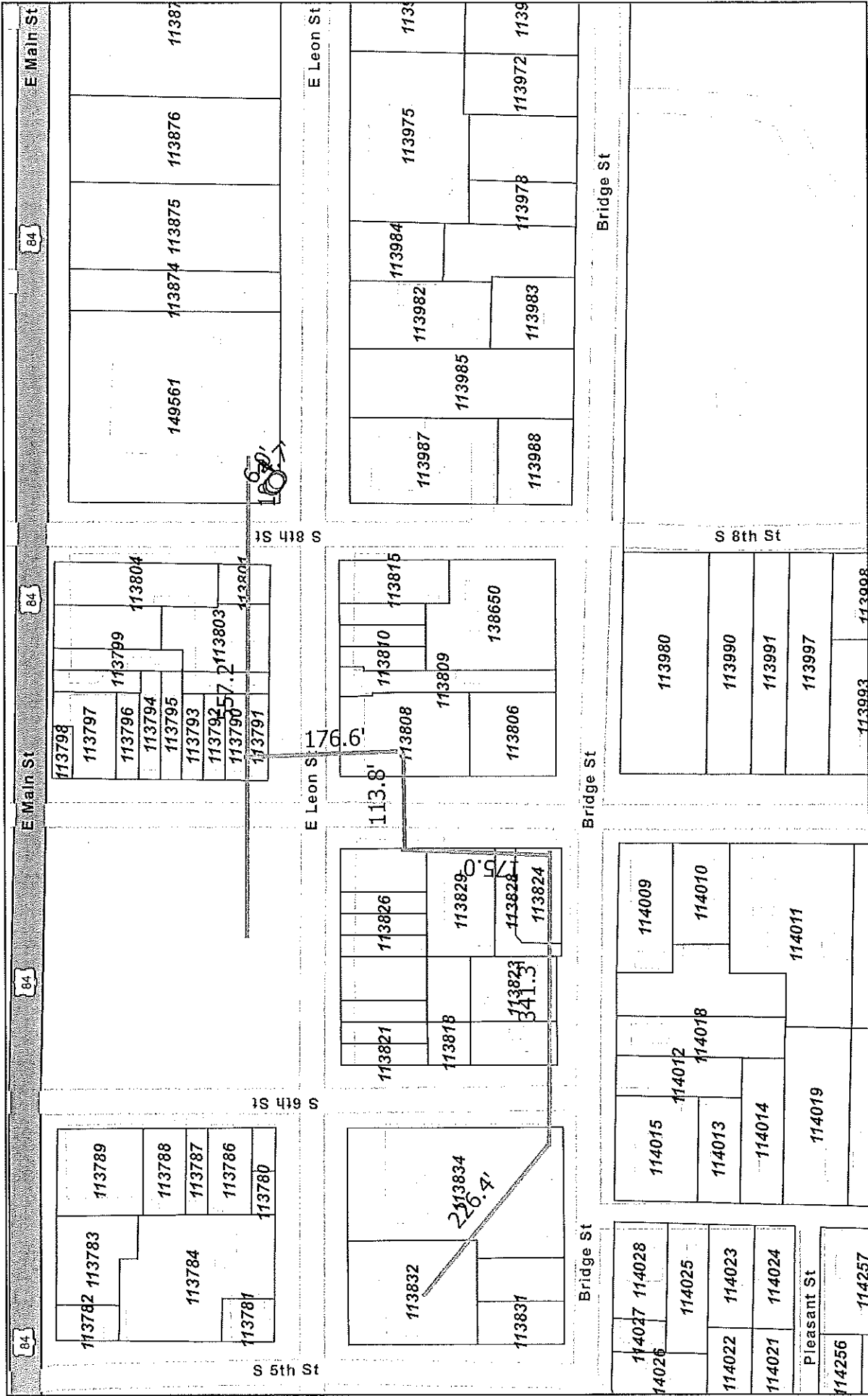
The County will evaluate all responses to this RFI and work to develop a set of standard specifications. RFI respondents may be engaged individually to provide clarification and additional feedback.

Following establishment of general design standards, the County intends to issue a Request for Proposals (RFP) for the design and construction of the fiber optic network cabling or wireless connectivity, and setup.

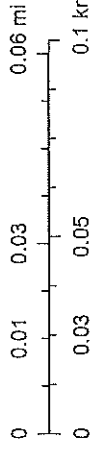
All materials submitted in response to this RFI become the property of Coryell County and thus become public records of which may be subject to public review, subject to any restrictions on release of proprietary information under the law.

END OF REQUEST FOR INFORMATION

Coryell CAD Web Map



1:2,257



8/31/2020, 8:24:28 AM

Parcels

Sources: Esri, HERE, Garmin, FAO, NOAA, USGS, © OpenStreetMap
 Coryell Central Appraisal District, BIS Consulting - www.bisconsulting.com
 Disclaimer: This product is for informational purposes only and has not been prepared for or be suitable for legal, engineering, or surveying purposes. It does not represent an on-the-ground survey and represents only the approximate relative location of boundaries.