

2254

JUL 29 2016

Gas leak or emergency

Leave immediately, then call
888-876-5786, 24 hours a day

Customer service

800-427-7142 toll-free
Monday - Friday, 7 am - 7 pm

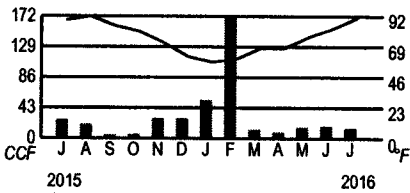
Call before you dig

Call 811
24 hours a day

Comments

PO Box 2628
Houston, TX 77252-2628

Your usage in a glance



Previous usage	Usage this month	Average daily temperature	
		1 year ago	Last month
Total CCF used	26	17	14
Average daily gas use (CCF)	0.8	0.5	0.4
Average daily temperature	85	79	87
Days in billing period	33	31	33

To better understand your home energy usage and learn energy savings tips, visit CenterPointEnergy.com/myenergyanalyzer

To report gas leaks, carbon monoxide and other gas emergencies, please call 1-888-876-5786. We appreciate your understanding that billing inquiries cannot be answered on this line.

Pay your next bill without lifting a finger. To enroll in AutoPay, just sign and date the back of your bill stub and return to us with a check for your payment amount. It's that easy!

ACCOUNT SUMMARY

Previous gas amount due	\$ 44.40
Payment Jul 12, 2016	- 44.40
Current gas charges (Details on page 2)	+ 42.70
Total amount due	\$ 42.70

Thank you!

APPROVED
COUNTY AUDITOR

Your account is ready to view now. Register for free online account access. View balance, usage history, make an online payment, view recommendations for saving energy and more with My Energy Analyzer, and much more. Register at CenterPointEnergy.com/myaccount.

C.F.
Code 010-54410-615 K.H.
Blessing Cm. Center-Nat'l Gas

182438

RECEIVED
JUL 28 2016

BY:

How to pay your bill

Online
Visit: CenterPointEnergy.com/paybill Pay immediately, schedule a payment or set up automatic monthly payments.

Phone
Call 800-427-7142 and make a payment using your checking or savings account, or by debit or credit card.

In person
To find a payment location, visit: CenterPointEnergy.com/paybill or call 800-427-7142.

Mail
Return the payment stub below, with your check or money order, using the return envelope.

CUSTOMER
MATAGORDA COUNTY PRCT #4
DBA BLESSING CMNTY CTR
SERVICE ADDRESS
734 Fm 616, Blessing, TX 77419

ACCOUNT NUMBER
2876939-6
DATE MAILED
Jul 25, 2016

DATE DUE **Aug 09, 2016**
AMOUNT DUE **\$ 42.70**

Rate: GSS-2085A-GRIP 2016

DEFINITIONS

CCF 1 CCF = 100 cubic feet of gas. This is how we measure your monthly usage.

Customer charge and base amount. Covers fixed costs for reading meters, issuing bills, maintaining facilities and gas lines, postage, etc. These costs occur even if you do not use gas during a billing period.

Gas Cost Adjustment (GCA) is the cost CenterPoint Energy pays for the gas it delivers to its customers.

Storage inventory charge allows the Company the opportunity to recover the regulated carrying cost of its investment in storage.

Reimbursement of local franchise fee is a fee paid to the city for the company's use of right-of-way in streets and alleys.

Reimbursement of state gross receipts tax is a tax imposed by the State of Texas on each utility company located in an incorporated city having a population of more than 1,000.

For a more detailed description of each of the terms used on your bill, please visit CenterPointEnergy.com/definitions or call Customer Support at 800-427-7142.

Current gas charges

Meter Number 3108800369975
Day Billing Period 33

Billing Period	Current Reading	-	Previous Reading	=	Usage
06/17/16 - 07/20/16	8904		8890		14 CCF
					Customer charge *
					Storage inventory charge
					14 CCF x \$ 0.00205
					0.03
					Base amount
					14 CCF x \$ 0.10670
					1.49
					Gas cost adjustment
					14 CCF x \$ 0.45970
					6.44
					Total current charges
					\$ 42.70

The customer charge includes the current GRIP surcharge of \$2.30.

Your account, managed your way

Sign up at CenterPointEnergy.com/myaccount

- **24/7 online account access.** View and/or pay your bill, view usage history, sign up for account services and much more.
- **Go paperless.** Receive an email when your bill is ready to view and pay. Get convenience, get rid of clutter.

- **Pay automatically.** Set up AutoPay by signing and returning the form below with your check payment. It's that easy!
- **Even out the highs and lows of your monthly bills.** Enroll in Average Monthly Billing and spread your natural gas costs throughout the year.
- **Get bill reminders.** Choose text or email, up to five days before your bill is due.

- **Other services.** Report a payment made at a payment location, set up a payment extension and much more. View options from your online account or visit CenterPointEnergy.com/selfservice if you'd prefer not to register.
- **Moving?** Please call us at 800-427-7142 at least two weeks before you move, or complete the forms at CenterPointEnergy.com/selfservice

Mail payments to CenterPoint Energy, PO Box 4981, Houston, TX 77210-4981



CenterPointEnergy.com

CUSTOMER
COUNTY BARN PRECINCT 3

2254

ACCOUNT NUMBER
2904139-9
DATE MAILED
Jul 25, 2016

Your account is past due.
TOTAL DUE **\$ 82.03**

SERVICE ADDRESS
405 Commerce St, Palacios, TX 77465

Gas leak or emergency
Leave immediately, then call
888-876-5786, 24 hours a day

Customer service
800-427-7142 toll-free
Monday - Friday, 7 am - 7 pm

Call before you dig
Call 811
24 hours a day

Comments
PO Box 2628
Houston, TX 77252-2628

To report gas leaks, carbon monoxide and other gas emergencies, please call 1-888-876-5786. We appreciate your understanding that billing inquiries cannot be answered on this line.

ACCOUNT SUMMARY

Previous gas amount due		\$ 41.34
Payment	No payment received.	- 0.00
Past due gas charges due immediately	pd 7-11-16 ck# 71517	\$ 41.34
Current gas charges due Aug 9, 2016 (Details on page 2)		+ 40.69
Total amount due		\$ 82.03

AUG 01 2016

kkk
APPROVED
COUNTY AUDITOR
DB

Your account is ready to view now. Register for free online account access. View balance, usage history, make an online payment, view recommendations for saving energy and money with My Energy Analyzer, and much more. Register at CenterPointEnergy.com/myaccount.

RECEIVED
AUG 01 2016

BY: *DB*

010-54410-614
~~54510420~~
AH

182439

How to pay your bill

Online
Visit: CenterPointEnergy.com/paybill Pay immediately, schedule a payment or set up automatic monthly payments.

Phone
Call 800-427-7142 and make a payment using your checking or savings account, or by debit or credit card.

In person
To find a payment location, visit: CenterPointEnergy.com/paybill or call 800-427-7142.

Mail
Return the payment stub below, with your check or money order, using the return envelope.

Please keep this portion for your records

CUSTOMER
 COUNTY BARN PRECINCT 3

ACCOUNT NUMBER
 2904139-9

Your account is past due.

SERVICE ADDRESS
 405 Commerce St, Palacios, TX 77465

DATE MAILED
 Jul 25, 2016

TOTAL DUE \$ 82.03

DEFINITIONS

CCF 1 CCF = 100 cubic feet of gas. This is how we measure your monthly usage.

Customer charge and base amount. Covers fixed costs for reading meters, issuing bills, maintaining facilities and gas lines, postage, etc. These costs occur even if you do not use gas during a billing period.

Gas Cost Adjustment (GCA) is the cost CenterPoint Energy pays for the gas it delivers to its customers.

Storage inventory charge allows the Company the opportunity to recover the regulated carrying cost of its investment in storage.

Reimbursement of local franchise fee is a fee paid to the city for the company's use of right-of-way in streets and alleys.

Reimbursement of state gross receipts tax is a tax imposed by the State of Texas on each utility company located in an incorporated city having a population of more than 1,000.

For a more detailed description of each of the terms used on your bill, please visit CenterPointEnergy.com/definitions or call Customer Support at 800-427-7142.

Current gas charges

Rate: GSS-2085A-GRIP 2016

Meter Number **Day Billing Period**
 3828200587513 33

Billing Period	Current Reading	- Previous Reading	= Total	x	Combined pressure factor	Adjusted Usage
06/17/16 - 07/20/16	9147	9146	1		1.14020	1 CCF
Customer charge *						
Base amount						\$ 34.74
Gas cost adjustment						0.11
Reimbursement of local franchise fee						0.46
Reimbursement of State GRT						1.88
City sales tax						0.40
State sales tax						0.75
						2.35
Total current charges						\$ 40.69

The customer charge includes the current GRIP surcharge of \$2.30.

Your account, managed your way

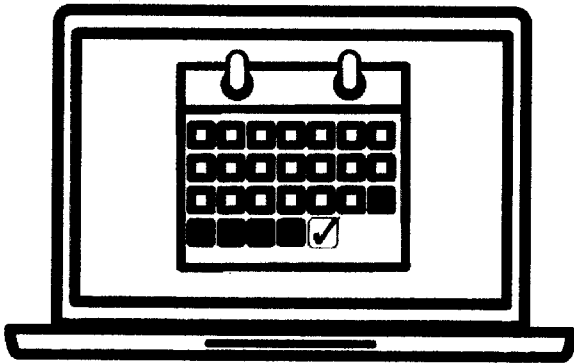
Sign up at CenterPointEnergy.com/myaccount

- **24/7 online account access.** View and/or pay your bill, view usage history, sign up for account services and much more.
- **Go paperless.** Receive an email when your bill is ready to view and pay. Get convenience, get rid of clutter.

- **Pay automatically.** Set up AutoPay by signing and returning the form below with your check payment. It's that easy!
- **Even out the highs and lows of your monthly bills.** Enroll in Average Monthly Billing and spread your natural gas costs throughout the year.
- **Get bill reminders.** Choose text or email, up to five days before your bill is due.

- **Other services.** Report a payment made at a payment location, set up a payment extension and much more. View options from your online account or visit CenterPointEnergy.com/selfservice if you'd prefer not to register.
- **Moving?** Please call us at 800-427-7142 at least two weeks before you move, or complete the forms at CenterPointEnergy.com/selfservice

Mail payments to CenterPoint Energy, PO Box 4981, Houston, TX 77210-4981



**AutoPay and Paperless Billing:
Safe, secure ways to pay your
bill on time.**

By combining *AutoPay* and *Paperless Billing* services, you'll get monthly reminders five days before your bill will be paid. Plus, you can see and print your bill with all details and graphs from your *My Account* page.

CenterPointEnergy.com/MyAccount

162361_CNP

**IMPACT. SERVICE.
VALUE.**

Our 2015 Corporate Citizenship Report shares the many ways our company and employees contribute to the communities where we live and serve.

- **300** employees served across **504** non-profit boards
- Recycled **11,239,518** pounds of scrap metal

- Employees devoted more than **203,000 HOURS** of volunteer time, valued at

\$4.7 million

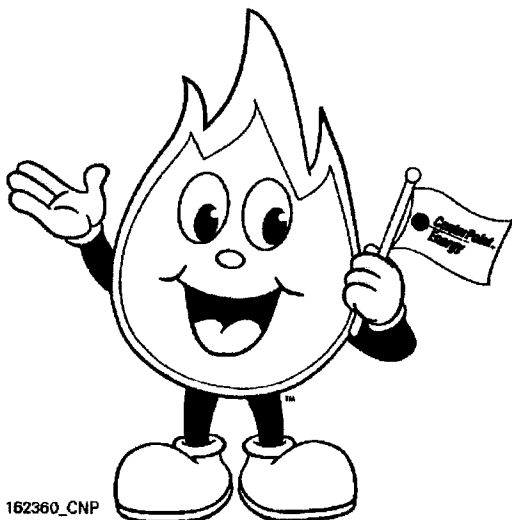


according to the Independent Sector

- **25,000** elementary students received Buddy/Louie safety activity books
- Completed **13+ million** remote service orders without sending crews and preventing emission of **9,000** metric tons of CO₂

CenterPointEnergy.com/GivingBack

162369_CNP



162360_CNP

**New, interactive website teaches kids,
teens to be Safe and Smart about natural gas**

Kids of all ages can play games, watch videos and download study materials to:

- Learn where natural gas comes from
- How it is used
- How to be safe and smart around it

Special sections for parents and teachers, too!

SafeAndSmart.org

July, 2016



Like us on Facebook

Connect with us at [Facebook.com/CenterPointEnergy](https://www.facebook.com/CenterPointEnergy) for energy saving tips, community news, weather info, home maintenance advice and some pet pics that will make you smile.

150768_SGD



What's trending? *Your home's energy use*

Use our **FREE** energy cost and emissions calculator to:

- See the cost differences and environmental impacts between natural gas, electricity, propane.
- Compare benefits of high-efficiency natural gas equipment.

[CenterPointEnergy.com/MyEnergyAnalyzer](https://www.CenterPointEnergy.com/MyEnergyAnalyzer)

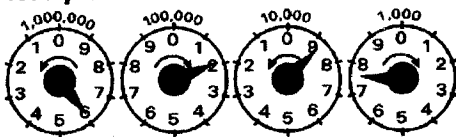
162361_CNP

A safety message from CenterPoint Energy

If you smell natural gas, leave immediately. Call our Gas Leak Hotline at 800-296-9815. Do not use or store flammable products such as gasoline in the same room or area near the water heater or any other gas appliance.

Si percibes un olor a gas natural, sal inmediatamente. Llama a nuestra línea telefónica para fugas de gas a uno de los números de teléfono que aparecen arriba. No use ni almacene productos inflamables tales como gasolina en la misma habitación o en áreas cercanas a un calentador de agua u otro tipo de aparato a gas.

How to read your meter



The following is an example of how to read a typical meter index.

Look at the four dials with their curved arrows. Read from right to left as follows:

1. Read the "thousand-foot" dial as 7, the last number that the pointer passed. Note that the curved arrow on the dial shows a clockwise movement of the pointer.
2. Read the next dial, the "10-thousand" dial. The curved arrow on the dial above shows a

counterclockwise direction. The pointer is near the 9, but to be sure whether to read it as that number or the lower number 8, the previously mentioned "same or lower number rule" must be applied. Since the pointer in the "thousand-foot" dial to the right is nearer the 8 and the pointer has not reached the 0, the "10-thousand" dial should be read as 8.

3. Read the "100-thousand" dial, it seems to point to 2. Double-check by using the rule above. Since the pointer of the "10-thousand" dial is between 8 and 9, take the lower reading number, 1, for the "100-thousand" dial.

4. Read the left-most dial, the "million-foot" dial. The pointer is near the 6. Using the "same or lower number rule", we find the pointer on the dial to the right is between 1 and 2, so we read the "million-foot" dial exactly as the number it is on or near, 6.

The entire meter reading is 6187.