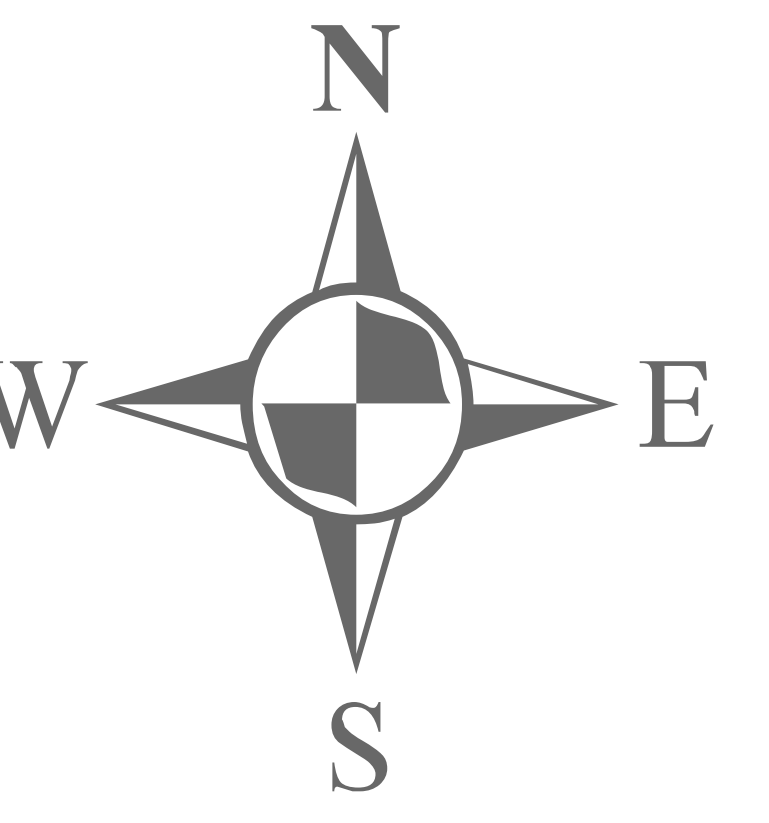
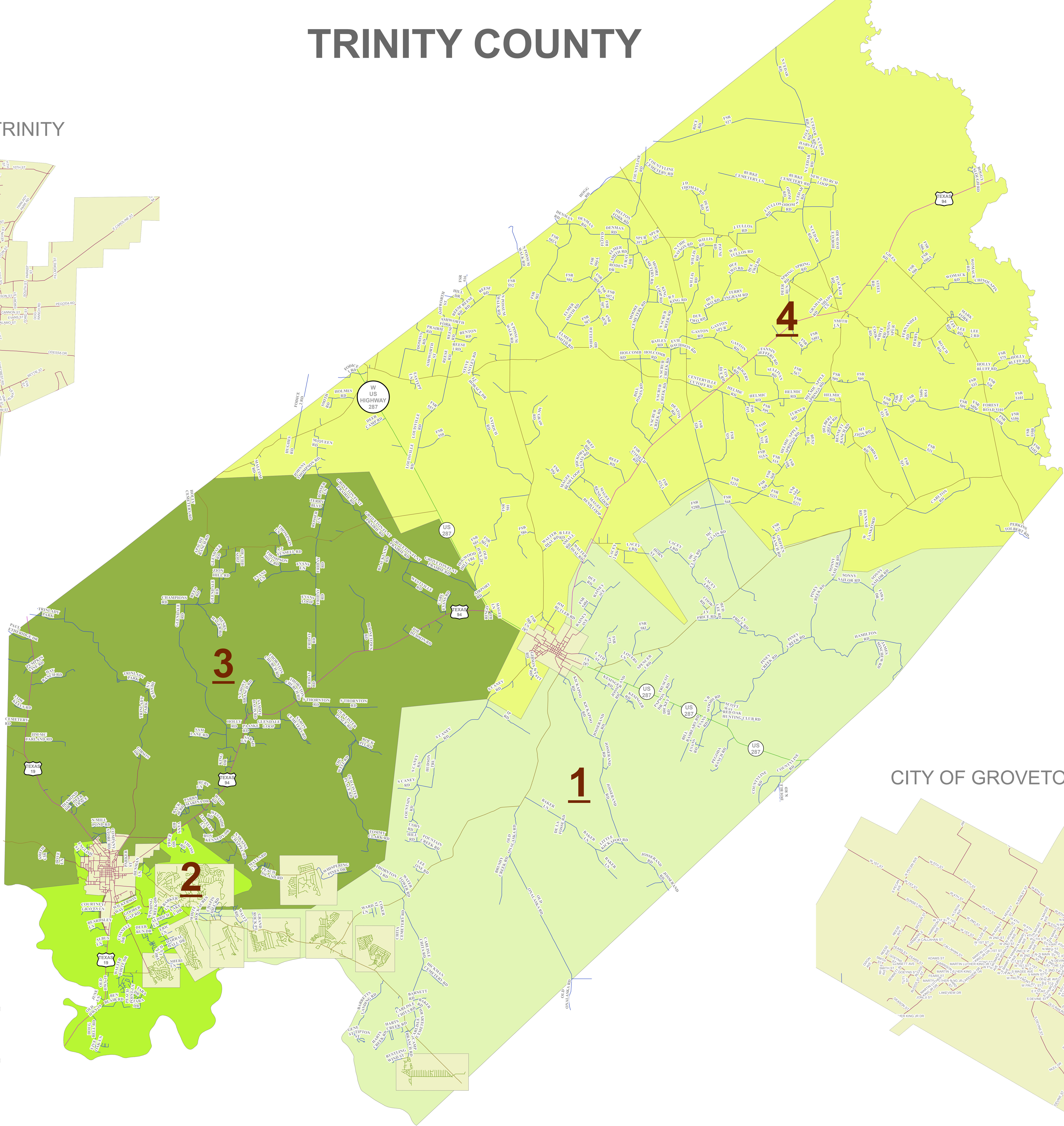
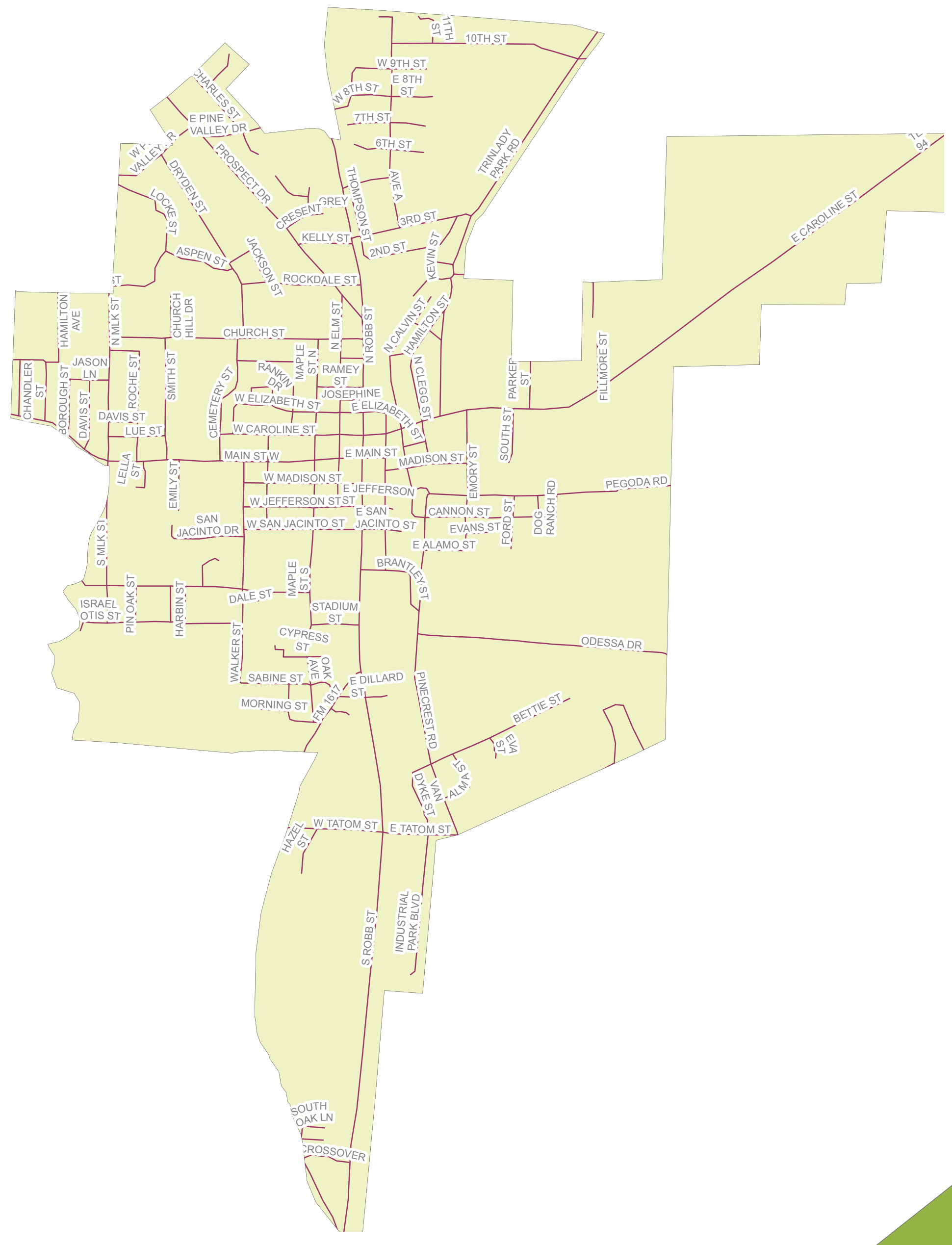


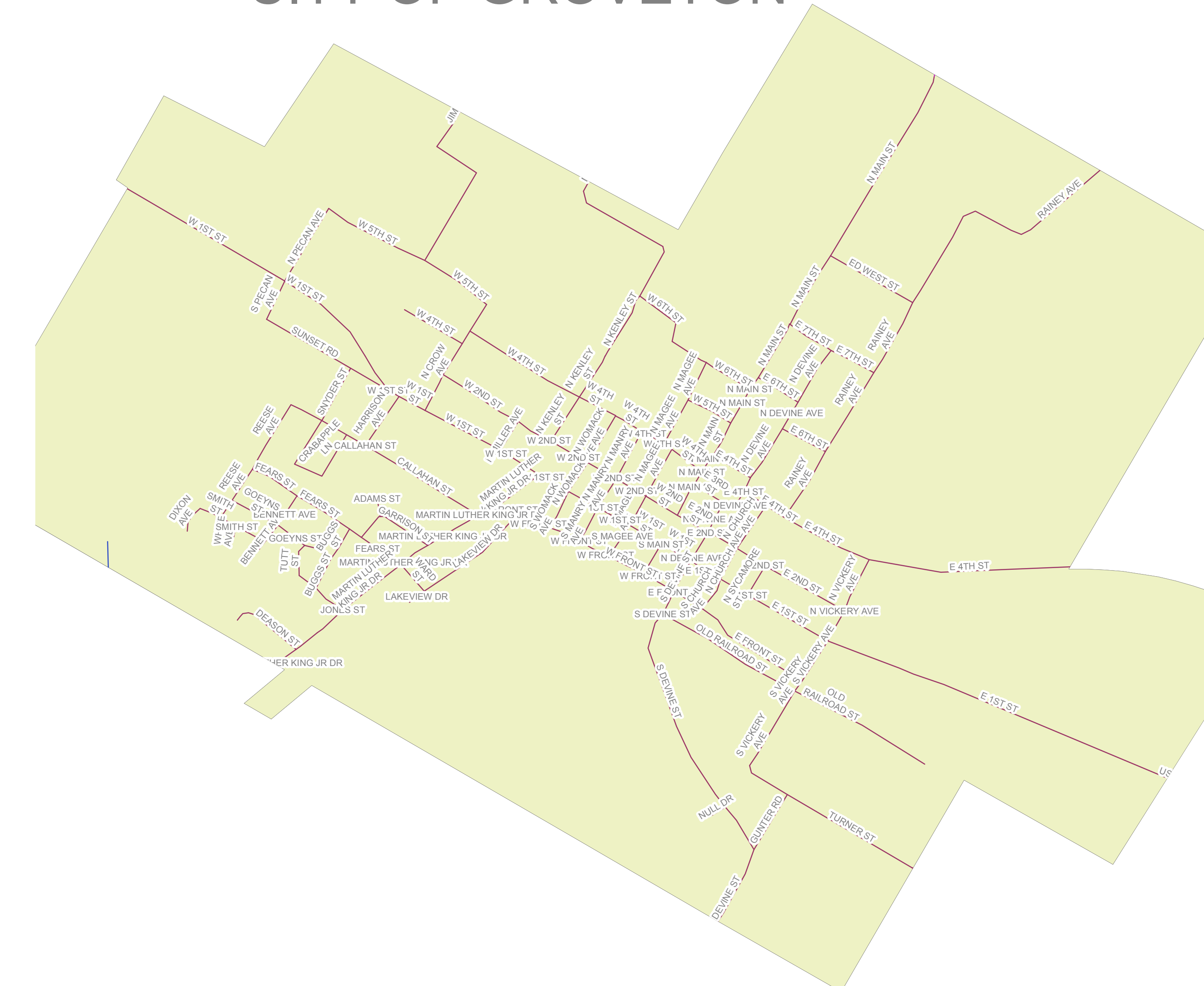
# TRINITY COUNTY



## CITY OF TRINITY



## CITY OF GROVETON



COUNTY ROAD MILES (TXDOT)  
 Centerline Miles - 2004  
 Unpaved (Earth and All-weather): 360  
 Paved (bituminous surface, treated, less than 1"): 8  
 Paved (mixed bituminous surface, base and surface depth 7"): 0  
 Paved (mixed bituminous surface, base and surface depth 7 or more"): 0  
 Asphalt: 1  
 Concrete: 0  
 Total Centerline Miles: 368 more  
 Lane Miles - 2004  
 Unpaved (Earth and All-weather): 720  
 Paved (bituminous surface, treated, less than 1"): 16  
 Paved (mixed bituminous surface, base and surface depth 7"): 0  
 Paved (mixed bituminous surface, base and surface depth 7 or more"): 0  
 Asphalt: 1  
 Concrete: 0  
 Total Lane Miles: 737

