



**HARDIN COUNTY CDBG-MIT
HURRICANE HARVEY
COMPETITIVE PROJECT
APPLICATIONS
14 DAY PUBLIC COMMENT
DRAFT
POSTED - 10/13/2020**

LMI ANALYSIS MAP

HARDIN COUNTY TEXAS





Hardin County
LMI Flood Control
Detention Project;
Jackson Creek

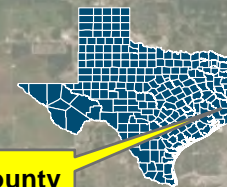
Hardin County
LMI Flood Control
Detention Project;
Beaumont Creek

Hardin County
LMI Flood Control
Detention Project;
Mill Creek

Legend

-  Census Block Groups - More than 51% LMI
-  Communities

DATA SOURCES:
- 2015 American Community Survey (ACS), TIGER/Line Database, US Census Bureau
- HUD Notice CPD-19-02
Subject: Low- and Moderate-Income Summary Data Updates

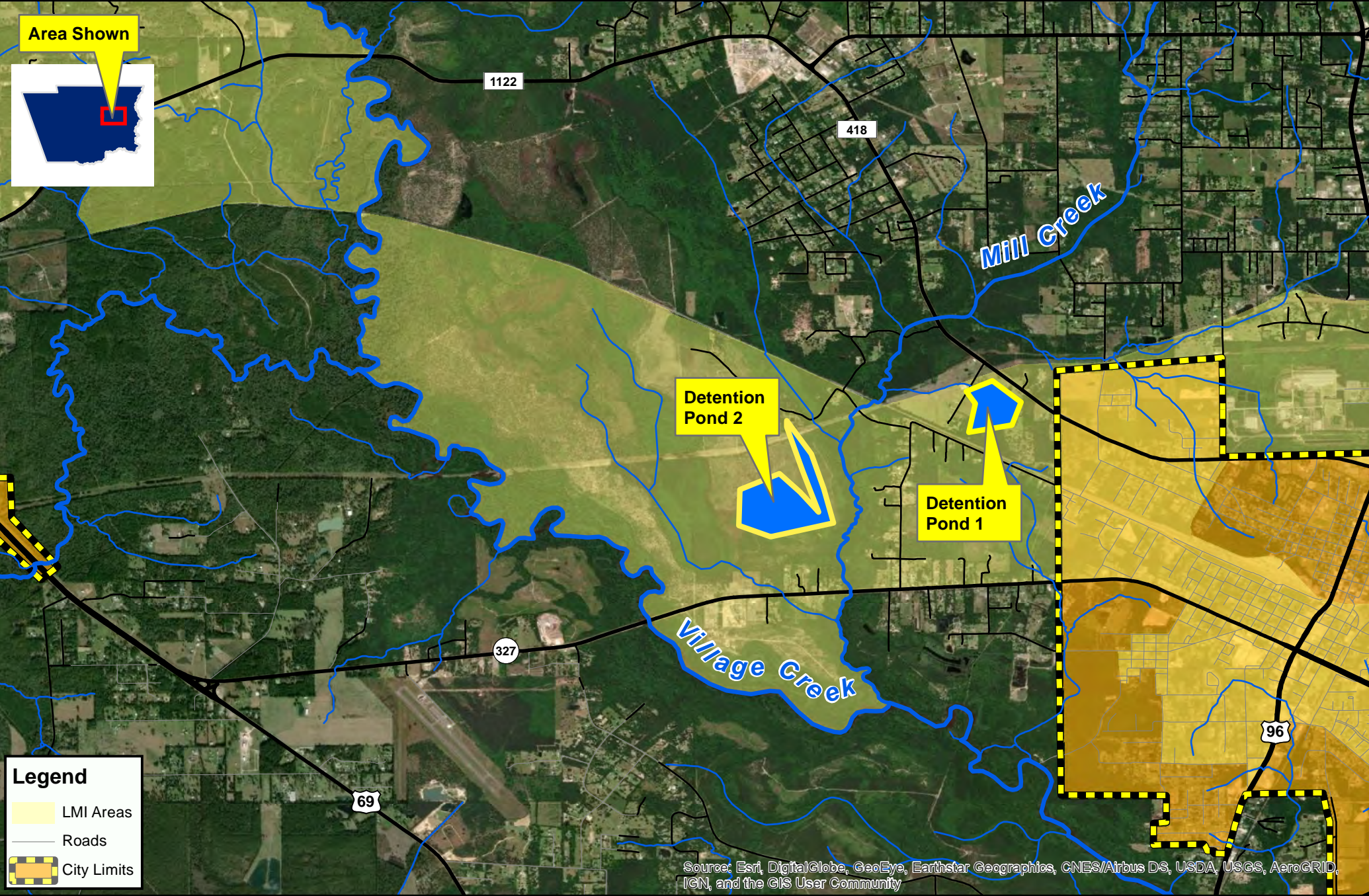


Hardin County

0 2.5 5 10 Miles



HARDIN COUNTY LMI FLOOD CONTROL DETENTION PROJECT: MILL CREEK



MILL CREEK PROJECT LOCATION MAP

HARDIN COUNTY TEXAS

0 0.375 0.75 1.5 Miles

Datum: NAD 1983
Map Date: October 2020
Cartographer(s): Rachel Phipps, Greg Wobbe
Data Sources: TxDOT, FEMA, DETCOG

MPTX ASSOCIATES



HARDIN COUNTY LMI FLOOD CONTROL DETENTION: MILL CREEK

C) Hurricane Harvey State Mitigation Competition Scoring Criteria

Question(s)	Criteria	Maximum Points	Self-Score
What is the project service area's Composite Disaster Index?	County Composite Disaster Index	10 Points Possible	
	<i>Top 10%</i>	<i>10 Points</i>	10
	<i>Top 25%</i>	<i>8 Points</i>	
	<i>Top 75%</i>	<i>5 Points</i>	
	<i>Bottom 25%</i>	<i>2 Points</i>	
	<i>Bottom 10%</i>	<i>0 Points</i>	
	<i>Prorated CDI rank</i>	<i>Calculated Points</i>	
What is the project service area's Social Vulnerability Index (SoVI)?	Social Vulnerability Index	10 Points Possible	
	<i>High</i>	<i>10 Points</i>	
	<i>Medium High</i>	<i>8 Points</i>	
	<i>Medium</i>	<i>5 Points</i>	5
	<i>Medium Low</i>	<i>2 Points</i>	
	<i>Low</i>	<i>0 Points</i>	
	<i>Prorated SoVI rank</i>	<i>Calculated Points</i>	
What is the project service area's Per Capita Market Value?	Per Capita Market Value	10 Points Possible	
	<i>Less than \$40,000.00</i>	<i>10 Points</i>	
	<i>\$40,000.01 - \$65,000.00</i>	<i>8 Points</i>	
	<i>\$65,000.01 - \$100,000.00</i>	<i>5 Points</i>	5
	<i>\$100,000.01 - \$250,000.00</i>	<i>2 Points</i>	
	<i>\$250,000.01 or greater</i>	<i>0 Points</i>	
Does the project meet the low-to moderate-income (LMI) HUD National Objective?	LMI National Objective	20 Points Possible	
	Project meets LMI national objective	<i>20 Points</i>	20
	Project does not meet LMI national objective	<i>0 Points</i>	
Is the project type identified in a Local Adopted Plan?	Project type Identified in Local Adopted Plan	5 Points Possible	
	Project type identified in local adopted plan	<i>5 Points</i>	5
	Project type not identified	<i>0 Points</i>	
What is the applicant's management capacity?	Management Capacity	15 Points Possible	
	No CDBG-DR contracts with GLO (management capacity assessment)	<i>Up to 15 Points</i>	





Question(s)	Criteria	Maximum Points	Self-Score
	Performance on GLO CDBG-DR contract(s), programs and/or projects	<i>Up to 15 Points</i>	15
What is the total project application amount per total project beneficiaries? What is the percentage of project beneficiaries out of the total population within the applying jurisdiction(s)?	Project Impact	25 Points Possible	
	Total project application amount per total project beneficiaries	<i>15 Points</i>	12
	Percentage of total project beneficiaries out of the total population within a jurisdiction(s)	<i>10 Points</i>	3.39
What percentage of project costs being requested are coming from non-CDBG funding sources?	Leverage	5 Points Possible	
	Non-CDBG Leverage (a minimum value of 1% of the CDBG-MIT funds requested)	<i>5 Points</i>	5
What mitigation or resiliency measures have been taken by the applicant(s)?	Mitigation/Resiliency Measures	5 Points Possible	
	Measures taken by the applicants(s)	<i>5 Points</i>	5
Total Possible Points		105 Possible Points	85.39
Tie: Breaker: Higher Poverty Rate			

*Applications that do not score a minimum of 65 points will only be considered after all applications scoring greater than this amount have been funded.

Hardin County

Drainage Improvements
Mill Creek Area

Legend

-  Drainage Area
-  Potential Detention Ponds

11,926 Acres of
Drainage Area

Detention Pond 1
64 Acres
30.370414°,
-94.213927°

Detention Pond 2
89 Acres
30.353577°,
-94.225898°

SPI
SCHAUMBURG & POLK, INC.

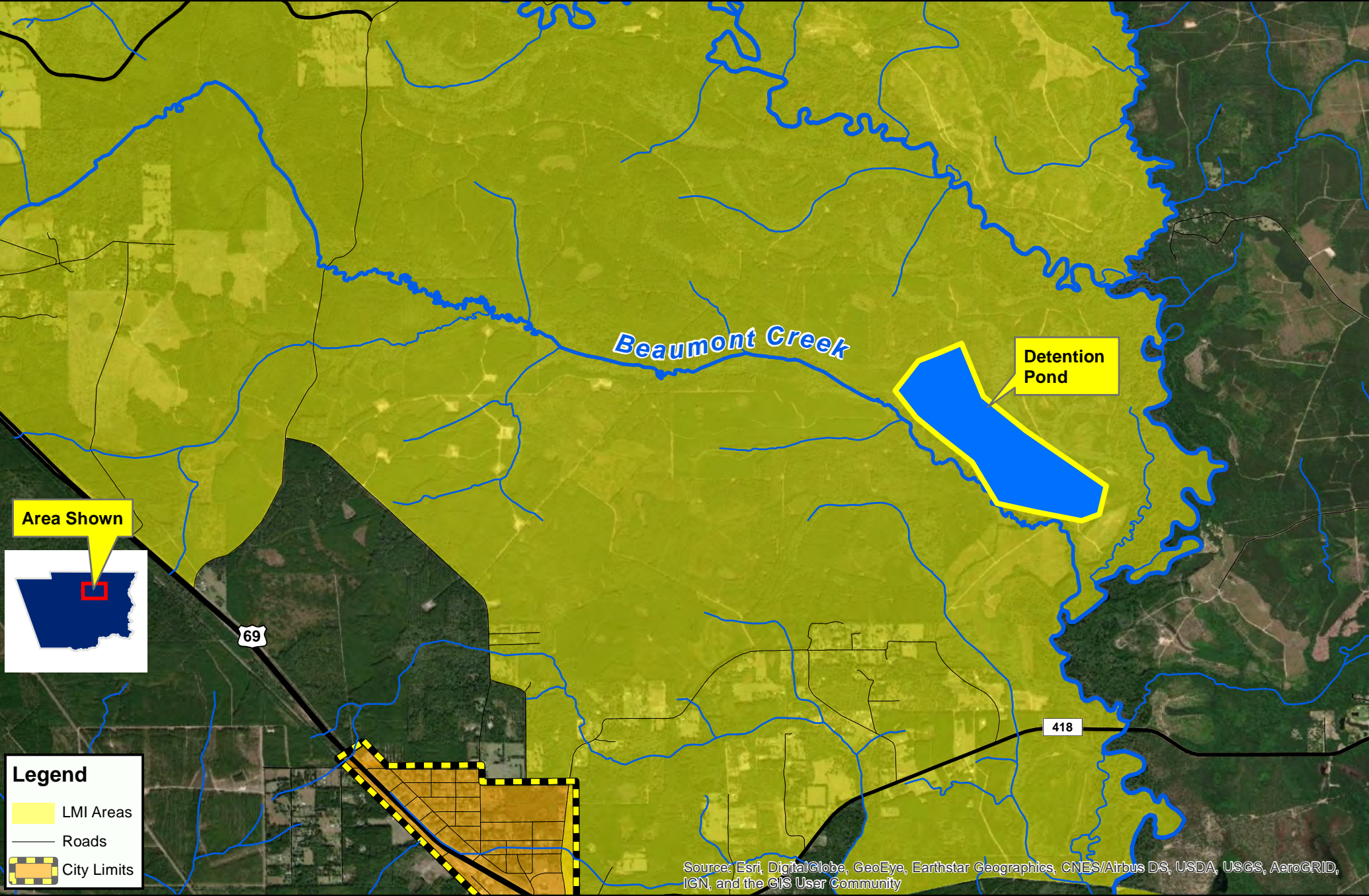


3 mi

Google Earth



**HARDIN COUNTY LMI FLOOD
CONTROL DETENTION
PROJECT: BEAUMONT CREEK**



BEAUMONT CREEK PROJECT LOCATION MAP

HARDIN COUNTY TEXAS

00.3750.751.5Miles

Datum: NAD 1983
Map Date: October 2020
Cartographer(s): Rachel Phipps, Greg Wobbe
Data Sources: TxDOT, FEMA, DETCOG



HARDIN COUNTY LMI FLOOD CONTROL DETENTION: BEAUMONT CREEK

C) Hurricane Harvey State Mitigation Competition Scoring Criteria

Question(s)	Criteria	Maximum Points	Self-Score
What is the project service area's Composite Disaster Index?	County Composite Disaster Index	10 Points Possible	10 Points
	<i>Top 10%</i>	<i>10 Points</i>	10
	<i>Top 25%</i>	<i>8 Points</i>	
	<i>Top 75%</i>	<i>5 Points</i>	
	<i>Bottom 25%</i>	<i>2 Points</i>	
	<i>Bottom 10%</i>	<i>0 Points</i>	
	<i>Prorated CDI rank</i>	<i>Calculated Points</i>	
What is the project service area's Social Vulnerability Index (SoVI)?	Social Vulnerability Index	10 Points Possible	5 Points
	<i>High</i>	<i>10 Points</i>	
	<i>Medium High</i>	<i>8 Points</i>	
	<i>Medium</i>	<i>5 Points</i>	5
	<i>Medium Low</i>	<i>2 Points</i>	
	<i>Low</i>	<i>0 Points</i>	
	<i>Prorated SoVI rank</i>	<i>Calculated Points</i>	
What is the project service area's Per Capita Market Value?	Per Capita Market Value	10 Points Possible	5 Points
	<i>Less than \$40,000.00</i>	<i>10 Points</i>	
	<i>\$40,000.01 - \$65,000.00</i>	<i>8 Points</i>	
	<i>\$65,000.01 - \$100,000.00</i>	<i>5 Points</i>	5
	<i>\$100,000.01 - \$250,000.00</i>	<i>2 Points</i>	
	<i>\$250,000.01 or greater</i>	<i>0 Points</i>	
Does the project meet the low-to moderate-income (LMI) HUD National Objective?	LMI National Objective	20 Points Possible	20 Points
	Project meets LMI national objective	<i>20 Points</i>	20
	Project does not meet LMI national objective	<i>0 Points</i>	
Is the project type identified in a Local Adopted Plan?	Project type Identified in Local Adopted Plan	5 Points Possible	5 Points
	Project type identified in local adopted plan	<i>5 Points</i>	5
	Project type not identified	<i>0 Points</i>	
What is the applicant's management capacity?	Management Capacity	15 Points Possible	15 Points
	No CDBG-DR contracts with GLO (management capacity assessment)	<i>Up to 15 Points</i>	15





Question(s)	Criteria	Maximum Points	Self-Score
	Performance on GLO CDBG-DR contract(s), programs and/or projects	<i>Up to 15 Points</i>	
What is the total project application amount per total project beneficiaries? What is the percentage of project beneficiaries out of the total population within the applying jurisdiction(s)?	Project Impact	25 Points Possible	11.06 Points
	Total project application amount per total project beneficiaries	<i>15 Points</i>	9
	Percentage of total project beneficiaries out of the total population within a jurisdiction(s)	<i>10 Points</i>	2.06
What percentage of project costs being requested are coming from non-CDBG funding sources?	Leverage	5 Points Possible	
	Non-CDBG Leverage (a minimum value of 1% of the CDBG-MIT funds requested)	<i>5 Points</i>	5
What mitigation or resiliency measures have been taken by the applicant(s)?	Mitigation/Resiliency Measures	5 Points Possible	5 Points
	Measures taken by the applicants(s)	<i>5 Points</i>	5
Total Possible Points		105 Possible Points	81.06
Tie: Breaker: Higher Poverty Rate			

*Applications that do not score a minimum of 65 points will only be considered after all applications scoring greater than this amount have been funded.

Hardin County

Drainage Improvements
Beaumont Creek Area

Legend

-  Drainage Area
-  Potential Detention Pond

9,933 Acres of
Drainage area

Detention Pond 1
210 Acres
30.423842°
-94.275750°

SPI
SCHAUMBURG & POLK, INC.

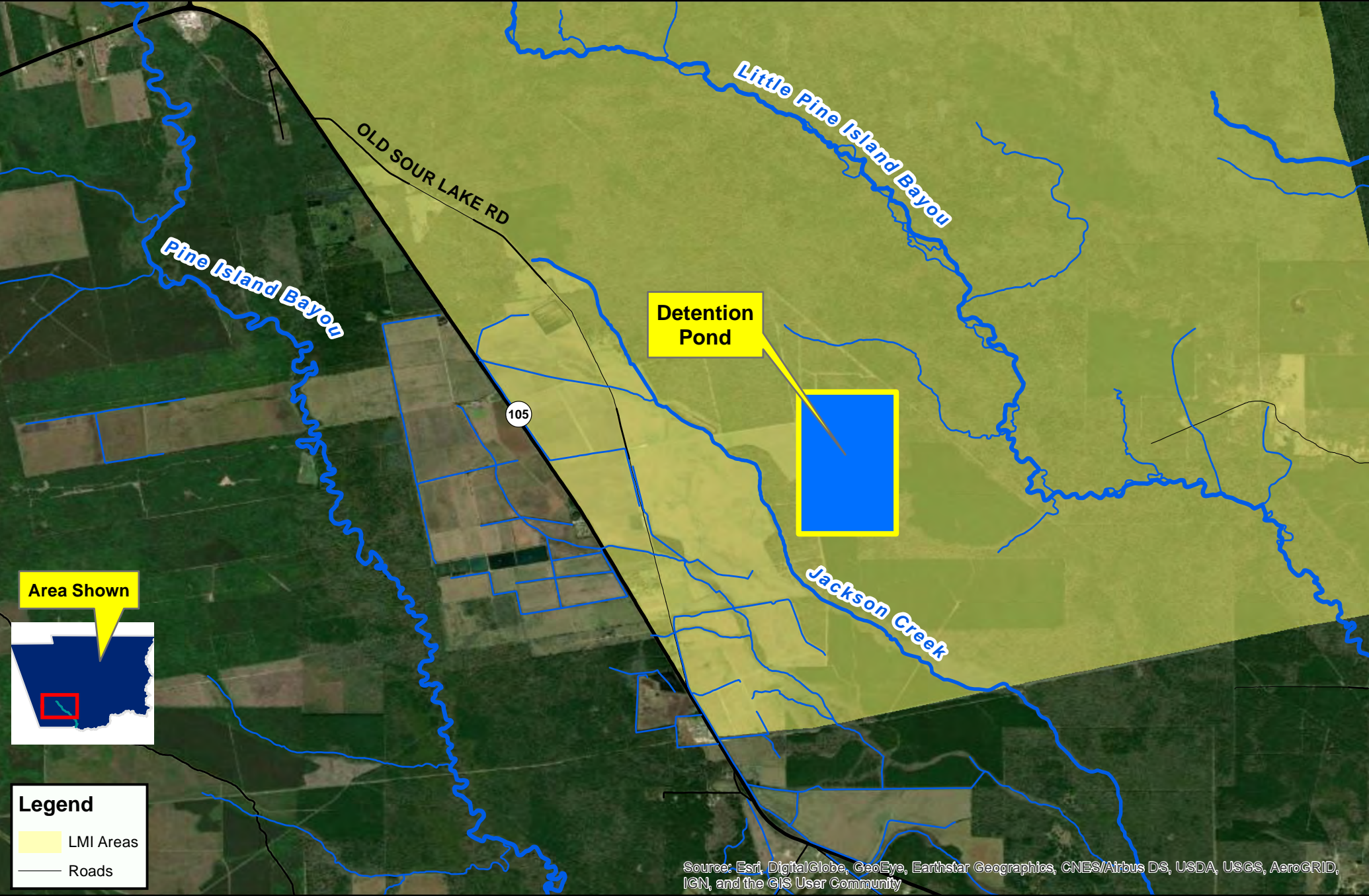


2 mi

Google Earth



HARDIN COUNTY LMI FLOOD CONTROL DETENTION PROJECT: JACKSON CREEK



JACKSON CREEK PROJECT LOCATION MAP

HARDIN COUNTY TEXAS

0 0.5 1 2 Miles

Datum: NAD 1983
 Map Date: October 2020
 Cartographer(s): Rachel Phipps, Greg Wobbe
 Data Sources: TxDOT, FEMA, DETCOG



HARDIN COUNTY LMI FLOOD CONTROL DETENTION: JACKSON CREEK

C) Hurricane Harvey State Mitigation Competition Scoring Criteria

Question(s)	Criteria	Maximum Points	Self-Score
What is the project service area's Composite Disaster Index?	County Composite Disaster Index	10 Points Possible	
	<i>Top 10%</i>	<i>10 Points</i>	10
	<i>Top 25%</i>	<i>8 Points</i>	
	<i>Top 75%</i>	<i>5 Points</i>	
	<i>Bottom 25%</i>	<i>2 Points</i>	
	<i>Bottom 10%</i>	<i>0 Points</i>	
	<i>Prorated CDI rank</i>	<i>Calculated Points</i>	
What is the project service area's Social Vulnerability Index (SoVI)?	Social Vulnerability Index	10 Points Possible	
	<i>High</i>	<i>10 Points</i>	
	<i>Medium High</i>	<i>8 Points</i>	
	<i>Medium</i>	<i>5 Points</i>	5
	<i>Medium Low</i>	<i>2 Points</i>	
	<i>Low</i>	<i>0 Points</i>	
	<i>Prorated SoVI rank</i>	<i>Calculated Points</i>	
What is the project service area's Per Capita Market Value?	Per Capita Market Value	10 Points Possible	
	<i>Less than \$40,000.00</i>	<i>10 Points</i>	
	<i>\$40,000.01 - \$65,000.00</i>	<i>8 Points</i>	
	<i>\$65,000.01 - \$100,000.00</i>	<i>5 Points</i>	5
	<i>\$100,000.01 - \$250,000.00</i>	<i>2 Points</i>	
	<i>\$250,000.01 or greater</i>	<i>0 Points</i>	
Does the project meet the low-to moderate-income (LMI) HUD National Objective?	LMI National Objective	20 Points Possible	
	Project meets LMI national objective	<i>20 Points</i>	20
	Project does not meet LMI national objective	<i>0 Points</i>	
Is the project type identified in a Local Adopted Plan?	Project type Identified in Local Adopted Plan	5 Points Possible	
	Project type identified in local adopted plan	<i>5 Points</i>	5
	Project type not identified	<i>0 Points</i>	
What is the applicant's management capacity?	Management Capacity	15 Points Possible	
	No CDBG-DR contracts with GLO (management capacity assessment)	<i>Up to 15 Points</i>	





Question(s)	Criteria	Maximum Points	Self-Score
	Performance on GLO CDBG-DR contract(s), programs and/or projects	<i>Up to 15 Points</i>	15
What is the total project application amount per total project beneficiaries? What is the percentage of project beneficiaries out of the total population within the applying jurisdiction(s)?	Project Impact	25 Points Possible	
	Total project application amount per total project beneficiaries	<i>15 Points</i>	6
	Percentage of total project beneficiaries out of the total population within a jurisdiction(s)	<i>10 Points</i>	0.37
What percentage of project costs being requested are coming from non-CDBG funding sources?	Leverage	5 Points Possible	
	Non-CDBG Leverage (a minimum value of 1% of the CDBG-MIT funds requested)	<i>5 Points</i>	5
What mitigation or resiliency measures have been taken by the applicant(s)?	Mitigation/Resiliency Measures	5 Points Possible	
	Measures taken by the applicants(s)	<i>5 Points</i>	5
Total Possible Points		105 Possible Points	76.37
Tie: Breaker: Higher Poverty Rate			

*Applications that do not score a minimum of 65 points will only be considered after all applications scoring greater than this amount have been funded.

Hardin County

Drainage Improvements
Jackson Creek Area

Legend

-  Drainage Area
-  Potential Detention Pond

12,855 Acres of
Drainage Area

Detention Pond 1
209 Acres
30.162292°,
-94.456117°

SPI
SCHAUMBURG & POLK, INC.



3 mi

Google Earth



TABLES AND SUPPORTING DOCUMENTS



**CDBG-MIT: Budget Justification of Retail Costs
(Former Table 2)**

Cost Verification Controls must be in place to assure that construction costs are reasonable and consistent with market costs at the time and place of construction.

Applicant/Subrecipient:	Hardin County					
Site/Activity Title:	Hardin County Detention Ponds					
Eligible:						
Materials/Facilities/Services	\$/Unit	Unit	Quantity	Construction	Acquisition	Total
Mill Creek Detention Pond						
Mobilization (insurance, payment and performance bonds, moving equipment) (3%)	\$ 257,000.00	EA	1	\$ 257,000.00	\$ -	\$ 257,000.00
Property Acquisition	\$ 12,500.00	AC	153		\$ 1,912,500.00	\$ 1,912,500.00
Channel Construction	\$ 120.00	LF	300	\$ 36,000.00	\$ -	\$ 36,000.00
Detention Pond Construction (including excavation and embankment)	\$ 3.00	CY	1579775	\$ 4,739,325.00	\$ -	\$ 4,739,325.00
All weather access road (including base and surface around perimeter of pond)	\$ 36.00	LF	22532	\$ 811,152.00	\$ -	\$ 811,152.00
Inlet Structure (including concrete structure and rip-rap for erosion control)	\$ 60,000.00	EA	2	\$ 120,000.00	\$ -	\$ 120,000.00
Outlet Structure (including concrete structure and outlet control)	\$ 60,000.00	EA	2	\$ 120,000.00	\$ -	\$ 120,000.00
Swale Drain	\$ 15.00	LF	21450	\$ 321,750.00	\$ -	\$ 321,750.00
Construction Material Tesiting	\$ 30,000.00	EA	1	\$ 30,000.00	\$ -	\$ 30,000.00
SWPPP (Including NOI, Installation, Maintenance, Inspection, NOT)	\$ 20,000.00	EA	1	\$ 20,000.00	\$ -	\$ 20,000.00
Beaumont Creek Detention Pond						
Mobilization (insurance, payment and performance bonds, moving equipment) (3%)	\$ 254,000.00	EA	1	\$ 254,000.00	\$ -	\$ 254,000.00
Property Acquisition	\$ 12,000.00	AC	210		\$ 2,520,000.00	\$ 2,520,000.00
Channel Construction	\$ 120.00	LF	300	\$ 36,000.00		\$ 36,000.00
Detention Pond Construction (including excavation and embankment)	\$ 3.00	CY	2168320	\$ 6,504,960.00		\$ 6,504,960.00
All weather access road (including base and surface around perimeter of pond)	\$ 36.00	LF	13228	\$ 476,208.00		\$ 476,208.00
Inlet Structure (including concrete structure and rip-rap for erosion control)	\$ 60,000.00	EA	1	\$ 60,000.00		\$ 60,000.00
Outlet Structure (including concrete structure and outlet control)	\$ 60,000.00	EA	1	\$ 60,000.00		\$ 60,000.00
Swale Drain	\$ 15.00	LF	13128	\$ 196,920.00		\$ 196,920.00
Construction Material Tesiting	\$ 25,000.00	EA	1	\$ 25,000.00		\$ 25,000.00
SWPPP (Including NOI, Installation, Maintenance, Inspection, NOT)	\$ 20,000.00	EA	1	\$ 20,000.00		\$ 20,000.00
Jackson Creek Detention Pond						

[illegible]

	\$ -		0	\$ -	\$ -	\$ -
	\$ -		0	\$ -	\$ -	\$ -
TOTAL	\$ 1,251,522.00			\$ 21,700,852.00	\$ 6,940,500.00	\$ 28,641,352.00

1. Identify and explain the annual projected operation and maintenance costs associated with the proposed activities.

2. Identify and explain any special engineering activities.

NA

Seal

Date:

Phone Number:

Signature of Registered Engineer/Architect Responsible For Budget Justification:

Mill Creek Scoring Criteria Documentation

County Composite Disaster Index

County	CDI_Rank
Hardin	5

Data Source: TX GLO-CDR; <https://recovery.texas.gov/files/resources/mitigation/mit-social-vulnerability-data.xlsx>

Social Vulnerability Index

County	SoVI_Rank	SoVI_5_Class
Hardin	3	Medium

Data Source: TX GLO-CDR; <https://recovery.texas.gov/files/resources/mitigation/mit-social-vulnerability-data.xlsx>

Per Capita Market Value

Methodology from pg. 10 of 29 of the Hurricane Harvey State Mitigation Competition - Applicant Eligibility & Scoring Criteria: "Per Capita Market Value (PCMV) is calculated by dividing a jurisdiction's Market Value by the jurisdiction's total population."

County	Market_Value
Hardin	\$ 4,033,395,170

Data Source: TX GLO-CDR; <https://recovery.texas.gov/files/resources/mitigation/mit-social-vulnerability-data.xlsx>

GEOTYPE	STATE	COUNTY	NAME	STUSAB	LOW	LOWMOD	LOWMODUNIV	LOWMOD_PCT
COUNTY	48	199	Hardin County	TX	9,375	17,550	54,895	31.97%

Data Source: TX GLO-CDR; <https://recovery.texas.gov/files/resources/mitigation/mit-2020-lmi-data.xlsx>

Note: Total Population = LOWMODUNIV

PCMV = Market Value / Total Population = \$4,033,395,170 / 54,895 = **\$73,474.73**

Rank 3	\$65,000.01-\$100,000.00	5 Points
--------	--------------------------	----------

LMI National Objective

See LMI project location map.

Project type identified in Local Adopted Plan

Project type: Drainage

Local Adopted Plan: Hardin County Hazard Mitigation Plan Update 2017

Plan Adoption Date: June 12, 2017

Page Number Identifying Project Type: Section 17, pg. 226

See following pages for a copy of the Adopted Plan and documentation showing it was formally adopted by Hardin County Commissioners Court on June 12, 2017.

See Hardin County Hazard Mitigation Plan Update 2017 for adoption resolution.

Management Capacity

See Management Capacity Analysis Documentation.

Project Impact

Total project application amount per total project beneficiaries

Methodology from pg. 20 of 29 of the Hurricane Harvey State Mitigation Competition - Applicant Eligibility & Scoring Criteria: “The cost per person ratio is determined by dividing the CDBG-MIT project application amount by the number of project beneficiaries.”

Cost per person ratio = Application amount / Project Beneficiaries = \$10,000,000.00 / 18,893 persons = approximately \$529.30 per person

Percentage of total project beneficiaries out of the total population within a jurisdiction

Methodology from pg. 20 of 29 of the Hurricane Harvey State Mitigation Competition - Applicant Eligibility & Scoring Criteria: “The percentage of persons benefitting within a jurisdiction(s) is determined dividing the total project of beneficiaries by the total population of the jurisdiction(s).”

Percentage of Project Beneficiaries to Total Population = Project Beneficiaries / Total Population = 18,893 persons / 55,794 persons = 33.9%

Leverage

No other funding sources will be used for this project. Therefore, it falls into the “Non-CDBG Leverage (a value less than 1% of the CDBG-MIT funds requested)” category and earns 0 points for the Leverage category.

Mitigation/Resiliency Measures

See Hardin County Hazard Mitigation Plan Update 2017 for a description of previous projects that have been implemented to increase resiliency and mitigation capabilities.

Poverty Rate

Methodology from pg. 10 of 29 of the Hurricane Harvey State Mitigation Competition - Applicant Eligibility & Scoring Criteria: “If the proposed project service area is wholly within one (1) county (either in the unincorporated areas or both the unincorporated areas and incorporated areas), then the county “Percent Below Poverty Level” information will be used.”

United States

Census

Bureau

S1701

// Search / Tables / S1701

POVERTY STATUS IN THE PAST 12 MONTHS

Survey/Program: American Community Survey

TableID: S1701

Product: 2018: ACS 5-Year Estimates Subject Tables

Data Notes

Selections

1 Geography

Years

Topic

Survey

Code

Hide

Filter

Transpose Table

Margin of Error

Restore Layout

Download

Print

More Data

Map

	Hardin County, Texas		
	Total	Below poverty level	Percent below poverty level
Label	Estimate	Estimate	Estimate
Population for whom poverty status is determined	55,794	7,010	12.6%

Percent below poverty level – Hardin County = 12.6%

Data Source: 2018 (most recently available) American Community Survey (ACS) 5- year estimates Table S1701 for Hardin County; <https://data.census.gov/cedsci/table?q=S1701&g=05000000US48199&tid=ACST5Y2018.S1701&moe=false&hidePreview=true>.

Beaumont Creek Scoring Criteria Documentation

County Composite Disaster Index

County	CDI_Rank
Hardin	5

Data Source: TX GLO-CDR; <https://recovery.texas.gov/files/resources/mitigation/mit-social-vulnerability-data.xlsx>

Social Vulnerability Index

County	SoVI_Rank	SoVI_5_Class
Hardin	3	Medium

Data Source: TX GLO-CDR; <https://recovery.texas.gov/files/resources/mitigation/mit-social-vulnerability-data.xlsx>

Per Capita Market Value

Methodology from pg. 10 of 29 of the Hurricane Harvey State Mitigation Competition - Applicant Eligibility & Scoring Criteria: "Per Capita Market Value (PCMV) is calculated by dividing a jurisdiction's Market Value by the jurisdiction's total population."

County	Market_Value
Hardin	\$ 4,033,395,170

Data Source: TX GLO-CDR; <https://recovery.texas.gov/files/resources/mitigation/mit-social-vulnerability-data.xlsx>

GEOTYPE	STATE	COUNTY	NAME	STUSAB	LOW	LOWMOD	LOWMODUNIV	LOWMOD_PCT
COUNTY	48	199	Hardin County	TX	9,375	17,550	54,895	31.97%

Data Source: TX GLO-CDR; <https://recovery.texas.gov/files/resources/mitigation/mit-2020-lmi-data.xlsx>

Note: Total Population = LOWMODUNIV

PCMV = Market Value / Total Population = \$4,033,395,170 / 54,895 = **\$73,474.73**

Rank 3	\$65,000.01-\$100,000.00	5 Points
--------	--------------------------	----------

LMI National Objective

See LMI project location map.

Project type identified in Local Adopted Plan

Project type: Drainage

Local Adopted Plan: Hardin County Hazard Mitigation Plan Update 2017

Plan Adoption Date: June 12, 2017

Page Number Identifying Project Type: Section 17, pg. 226

See following pages for a copy of the Adopted Plan and documentation showing it was formally adopted by Hardin County Commissioners Court on June 12, 2017.

See Hardin County Hazard Mitigation Plan Update 2017 for adoption resolution.

Management Capacity

See Management Capacity Analysis Documentation.

Project Impact

Total project application amount per total project beneficiaries

Methodology from pg. 20 of 29 of the Hurricane Harvey State Mitigation Competition - Applicant Eligibility & Scoring Criteria: “The cost per person ratio is determined by dividing the CDBG-MIT project application amount by the number of project beneficiaries.”

Cost per person ratio = Application amount / Project Beneficiaries = \$10,000,000.00 / 11,533 persons = **approximately \$867.08 per person**

Percentage of total project beneficiaries out of the total population within a jurisdiction

Methodology from pg. 20 of 29 of the Hurricane Harvey State Mitigation Competition - Applicant Eligibility & Scoring Criteria: “The percentage of persons benefitting within a jurisdiction(s) is determined dividing the total project of beneficiaries by the total population of the jurisdiction(s).”

Percentage of Project Beneficiaries to Total Population = Project Beneficiaries / Total Population = 11,533 persons / 55,794 persons = **20.6%**

Leverage

No other funding sources will be used for this project. Therefore, it falls into the “Non-CDBG Leverage (a value less than 1% of the CDBG-MIT funds requested)” category and earns 0 points for the Leverage category.

Mitigation/Resiliency Measures

See Hardin County Hazard Mitigation Plan Update 2017 for a description of previous projects that have been implemented to increase resiliency and mitigation capabilities.

Poverty Rate

Methodology from pg. 10 of 29 of the Hurricane Harvey State Mitigation Competition - Applicant Eligibility & Scoring Criteria: “If the proposed project service area is wholly within one (1) county (either in the unincorporated areas or both the unincorporated areas and incorporated areas), then the county “Percent Below Poverty Level” information will be used.”

United States
Census
Bureau

Q

S1701

// Search / Tables / S1701

POVERTY STATUS IN THE PAST 12 MONTHS

Survey/Program: American Community Survey TableID: S1701 Product: 2018: ACS 5-Year Estimates Subject Tables

Data Notes

Selections

1 Geography

Years

Topic

Survey

Code

Hide

Filter

Transpose Table

Margin of Error

Restore Layout

Download

Print

More Data

Map

Hardin County, Texas

	Total	Below poverty level	Percent below poverty level
Label	Estimate	Estimate	Estimate
Population for whom poverty status is determined	55,794	7,010	12.6%

Percent below poverty level – Hardin County = **12.6%**

Data Source: 2018 (most recently available) American Community Survey (ACS) 5- year estimates Table S1701 for Hardin County; <https://data.census.gov/cedsci/table?q=S1701&g=0500000US48199&tid=ACSS1701&moe=false&hidePreview=true>.

Jackson Creek Scoring Criteria Documentation

County Composite Disaster Index

County	CDI_Rank
Hardin	5

Data Source: TX GLO-CDR; <https://recovery.texas.gov/files/resources/mitigation/mit-social-vulnerability-data.xlsx>

Social Vulnerability Index

County	SoVI_Rank	SoVI_5_Class
Hardin	3	Medium

Data Source: TX GLO-CDR; <https://recovery.texas.gov/files/resources/mitigation/mit-social-vulnerability-data.xlsx>

Per Capita Market Value

Methodology from pg. 10 of 29 of the Hurricane Harvey State Mitigation Competition - Applicant Eligibility & Scoring Criteria: "Per Capita Market Value (PCMV) is calculated by dividing a jurisdiction's Market Value by the jurisdiction's total population."

County	Market_Value
Hardin	\$ 4,033,395,170

Data Source: TX GLO-CDR; <https://recovery.texas.gov/files/resources/mitigation/mit-social-vulnerability-data.xlsx>

GEOTYPE	STATE	COUNTY	NAME	STUSAB	LOW	LOWMOD	LOWMODUNIV	LOWMOD_PCT
COUNTY	48	199	Hardin County	TX	9,375	17,550	54,895	31.97%

Data Source: TX GLO-CDR; <https://recovery.texas.gov/files/resources/mitigation/mit-2020-lmi-data.xlsx>

Note: Total Population = LOWMODUNIV

PCMV = Market Value / Total Population = \$4,033,395,170 / 54,895 = **\$73,474.73**

Rank 3	\$65,000.01-\$100,000.00	5 Points
--------	--------------------------	----------

LMI National Objective

See LMI project location map.

Project type identified in Local Adopted Plan

Project type: Drainage

Local Adopted Plan: Hardin County Hazard Mitigation Plan Update 2017

Plan Adoption Date: June 12, 2017

Page Number Identifying Project Type: Section 17, pg. 226

See following pages for a copy of the Adopted Plan and documentation showing it was formally adopted by Hardin County Commissioners Court on June 12, 2017.

See Hardin County Hazard Mitigation Plan Update 2017 for adoption resolution.

Management Capacity

See Management Capacity Analysis Documentation.

Project Impact

Total project application amount per total project beneficiaries

Methodology from pg. 20 of 29 of the Hurricane Harvey State Mitigation Competition - Applicant Eligibility & Scoring Criteria: “The cost per person ratio is determined by dividing the CDBG-MIT project application amount by the number of project beneficiaries.”

Cost per person ratio = Application amount / Project Beneficiaries = \$10,000,000.00 / 2,041 persons = approximately \$4,899.56 per person

Percentage of total project beneficiaries out of the total population within a jurisdiction

Methodology from pg. 20 of 29 of the Hurricane Harvey State Mitigation Competition - Applicant Eligibility & Scoring Criteria: “The percentage of persons benefitting within a jurisdiction(s) is determined dividing the total project of beneficiaries by the total population of the jurisdiction(s).”

Percentage of Project Beneficiaries to Total Population = Project Beneficiaries / Total Population = 2,041 persons / 55,794 persons = 3.7%

Leverage

No other funding sources will be used for this project. Therefore, it falls into the “Non-CDBG Leverage (a value less than 1% of the CDBG-MIT funds requested)” category and earns 0 points for the Leverage category.

Mitigation/Resiliency Measures

See Hardin County Hazard Mitigation Plan Update 2017 for a description of previous projects that have been implemented to increase resiliency and mitigation capabilities.

Poverty Rate

Methodology from pg. 10 of 29 of the Hurricane Harvey State Mitigation Competition - Applicant Eligibility & Scoring Criteria: “If the proposed project service area is wholly within one (1) county (either in the unincorporated areas or both the unincorporated areas and incorporated areas), then the county “Percent Below Poverty Level” information will be used.”

United States
Census
Bureau

S1701

// Search / Tables / S1701

POVERTY STATUS IN THE PAST 12 MONTHS

Survey/Program: American Community Survey

TableID: S1701

Product: 2018: ACS 5-Year Estimates Subject Tables

Data Notes

Selections

1 Geography

Years

Topic

Survey

123

Code

Hide

Filter

Transpose Table

Margin of Error

Restore Layout

Download

Print

More Data

Map

	Hardin County, Texas		
	Total	Below poverty level	Percent below poverty level
Label	Estimate	Estimate	Estimate
Population for whom poverty status is determined	55,794	7,010	12.6%

Percent below poverty level – Hardin County = 12.6%

Data Source: 2018 (most recently available) American Community Survey (ACS) 5- year estimates Table S1701 for Hardin County; <https://data.census.gov/cedsci/table?q=S1701&g=05000000US48199&tid=ACST5Y2018.S1701&moe=false&hidePreview=true>.