



**WASHINGTON COUNTY**  
Engineering And Development Services  
**Wesley Stolz, P.E., County Engineer**  
3650 Hwy 36 N, Brenham, Texas 77833  
Phone: (979)277-6275  
Email: [wcrbOffice@washingtoncountytexas.gov](mailto:wcrbOffice@washingtoncountytexas.gov)

April 24, 2025

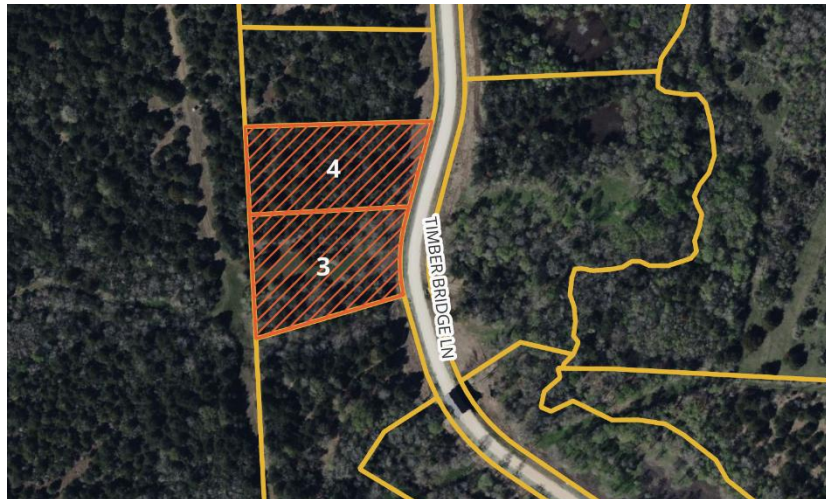
## **NOTICE OF DEVELOPMENT APPLICATION FOR A REVISION OF PLAT**

### **Timber Bridge Subdivision**

#### **Lots 3 & 4**

Washington County has received a Development Application for a lot merge for lots 3 & 4 in the Timber Bridge Subdivision that does not affect a public interest or public property.

Timber Bridge Subdivision is located in the A-0075 David Lawrence Survey, Washington County, Texas as shown on plat recorded in Plat Cabinet File numbers 785A Plat Records of Washington County, Texas is a filed and recorded subdivision in the County's unincorporated area.



The land owners of lots 3 & 4 have applied to merge the existing two lots into one proposed lot (3A). This revision will not affect other parcels nor remove any easements, covenants or restrictions located outside of the boundaries of lots 3 & 4 in the Timber Bridge Subdivision.

On **May 27<sup>th</sup>, 2025 at 9:00am** the Commissioners Court will hold a regular Commissioners Court meeting and shall consider approval of an order to permit the revision.

If you wish to attend or provide comment during the court meeting, please contact The Washington County Engineering and Development Services Office prior to the **May 27<sup>th</sup>, 2025** meeting date to confirm the date and time. You may also submit written comments to the Engineering and Development Services Department. Written comments must be received by 8:30a.m. Monday, **May 26<sup>th</sup>, 2025** for presentation to the Court.

Comments may be sent to:

Washington County Engineering and Development Services  
3650 Highway 36 North  
Brenham, Texas 77833